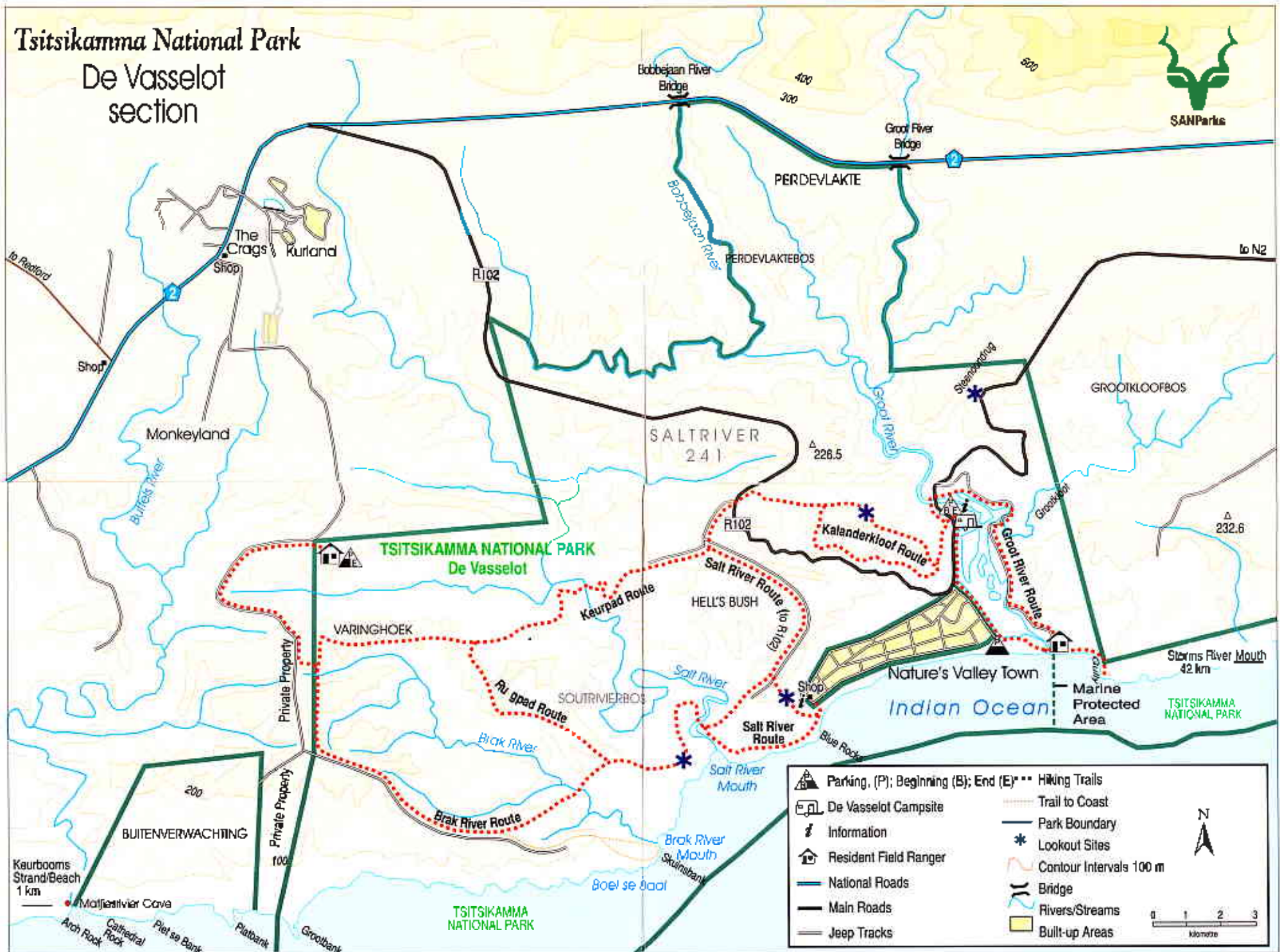


Tsitsikamma National Park

De Vasselot section



	Parking (P); Beginning (B); End (E)		Hiking Trails
	De Vasselot Campsite		Trail to Coast
	Information		Park Boundary
	Resident Field Ranger		Lookout Sites
	National Roads		Contour Intervals 100 m
	Main Roads		Bridge
	Jeep Tracks		Rivers/Streams
			Built-up Areas

N

0 1 2 3
kilometre

Kaurbooms Strand/Beach 1 km
 Maljiesrivier Cave
 Arch Rock
 Cathedral Rock
 Piet se Bank
 Platbank
 Grootbank

BUITENVERWACHTING

TSITSIKAMMA NATIONAL PARK

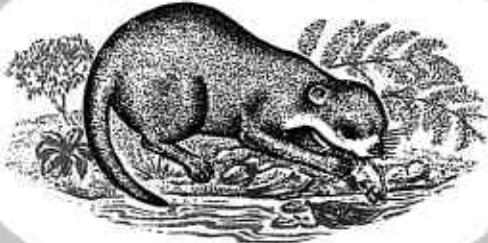
TSITSIKAMMA NATIONAL PARK



SOUTH AFRICAN NATIONAL PARKS

TSITSIKAMMA

DE VASSELOT



SECTION

NATIONAL PARK

TSITSIKAMMA NATIONAL PARK
P.O. BOX STORMS RIVER, STORMS RIVER 6308

DE VASSELOT CAMP SITE:

The De Vasselot Camp Site is situated on the banks of the Groot River, directly south of the Groot River Pass. The closest towns are Nature's Valley (1 km) and Plettenberg Bay (30 km).

There are 45 camping sites and 10 forest cabins with standard amenities. Each site is situated in the forest and every camper may enjoy privacy and appreciate the natural environment.

Power points are not supplied.

- Beach within walking distance
- Canoes available for hire at reception
- Bird watcher's paradise

Camping facilities for organised groups (schools, hikers, etc.) are available.

Reservations:

SANParks, P.O. Box 787, PRETORIA, 0001.

Tel. No. (012) 343 1991

or <http://www.parks-sa.co.za>

Enquiries:

(044) 531 6700



SOUTH AFRICAN NATIONAL PARKS

HISTORY:

On the 18th December 1987, the De Vasselot Section was incorporated into the Tsitsikamma National Park. The size of this section is 2 560,8 ha. of which 64% is taken up by forests, while fynbos comprises the remaining 36%.

Previously the area was inhabited by the Khoisan, previously referred to as Bushmen, Hottentots and Strandlopers. Their presence has been proved by remains in excavations in various caves along the coast. The densely overgrown mountains, impenetrable forests and deep river ravines made travel by wagon and ox almost impossible, thus making this part of the country relatively inaccessible to exploiters

Captain Christopher Harrison, the first forest conservator of the Tsitsikamma, was appointed in 1856. In 1867 the area became accessible to the woodcutters. The discovery of diamonds caused a great demand for wood and sources were exploited. During 1880 the Cape Government appointed a French forestry expert of international repute, the Count H. de Vasselot de Regne, superintendent of Forest and Woods of the entire Cape Colony. De Vasselot introduced a new forest management system and the first forest act was accepted by the Cape Parliament in 1888.

The present camping site was used as a base for the convicts that helped Thomas Bains build the Groot River- and Bloukrans passes. De Vasselot, which was proclaimed a nature reserve in June 1974, was transferred from the Department of Environment Affairs to the SANParks as part of the Governments' rationalisation programme regarding nature conservation.

TRAILS

All trails within the De Vasselot Section are one-day routes. Although drinking water occurs along some routes it is advisable to carry sufficient water with you! Utilization of trails is only permitted during daylight hours. Exercise caution at all times.

SANParks will not be responsible for any injury or loss/damage of personal property.

No	Approx. Time & Distance	Description of Route
1.	± 2½ hours 4,8 km	Kalanderkloof Trail: The trail starts directly opposite the entrance of the De Vasselot camping site. This route progresses up the Kalanderkloof to the lookout point. From the lookout point the route winds all the way back to the campsite.
2.	± 2½ hours 6,0 km	Groot River Trail: Starts at the entrance to the De Vasselot camp site, turns to the right and follows the tar road to the Groot River bridge. Just after the bridge the path turns off to the right and follows the banks of the Groot River to the river mouth. At the river mouth the route turns left (east) and follows the last section of the Otter trail up to the gale on the promontory above the Gully. Walk back along the same route to the Groot River mouth, across the mouth and follow the road back to the campsite. IMPORTANT: The route only goes to the gate on the promontory above the Gully and NOT further than this point.
3.	± 6 hours 15,1 km	Salt River via the Keurpad route: The trail starts opposite the De Vasselot Camp site and follows the Kalanderkloof trail. At the top of the Kalanderkloof turn left and continue towards the tarred road. The route continues over the tarred road and past a gate. Approximately 450 m from the gate the road forks. Follow the Keurpad signage. This route crosses the Salt River and forks approx. 2,0 km from the river. Continue left along the Ruggpad, which leads all the way down to the Salt River Mouth, and back along the coast to Nature's Valley.
4.	± 2½ hours from shop *9,0 km	Salt River mouth route: Starts at De Vasselot camp site, down to the shop in Nature's Valley. The route follows the beach for approx. 400 meters where the route turns right into the scrub forest. Follow the path past a lookout point until it joins up with a jeep track. Turn left towards the Salt River mouth. Follow the route back along the coast towards the shop in Nature's Valley and further to the campsite. *Distance indicated includes round trip from the camp site to the shop which is accessible by vehicle (4km)
5.	± 7 hours 17,1 km	The Craggs via Brak river: Starts at De Vasselot campsite via the Salt River mouth route. Path continues across the river. After 1,1 km the trail forks. Follow the Brak River route. This route will eventually meet up with a jeep track. At the end of the jeep track, follow a firebreak in the forest for ± 1km. Signage will lead you to a gravel road which continues for 2,4 km's to the SANParks rangers house (parking available) which is 3,6 km from the shop at the Craggs. IMPORTANT: This is not a circular route.
6.	± 6 hours 16 km	Varinghoek via the Keurpad and back via the Brak river route: The route starts at the top of the Groot River pass on the Plettenberg Bay side, at the picnic area (R102 route). Approx. 450 meters from the gate the road forks, take the right hand fork and follow the Keurpad path for 2km to the next fork. Continue along the Varinghoek route, which will eventually join up with the jeep track on the Brak River route. Follow this route to where the trail leaves the jeep track to the left. Continue on this route until it joins up with the Ruggpad and eventually leads to the Salt River. Follow the Salt River route back to the departure point at the